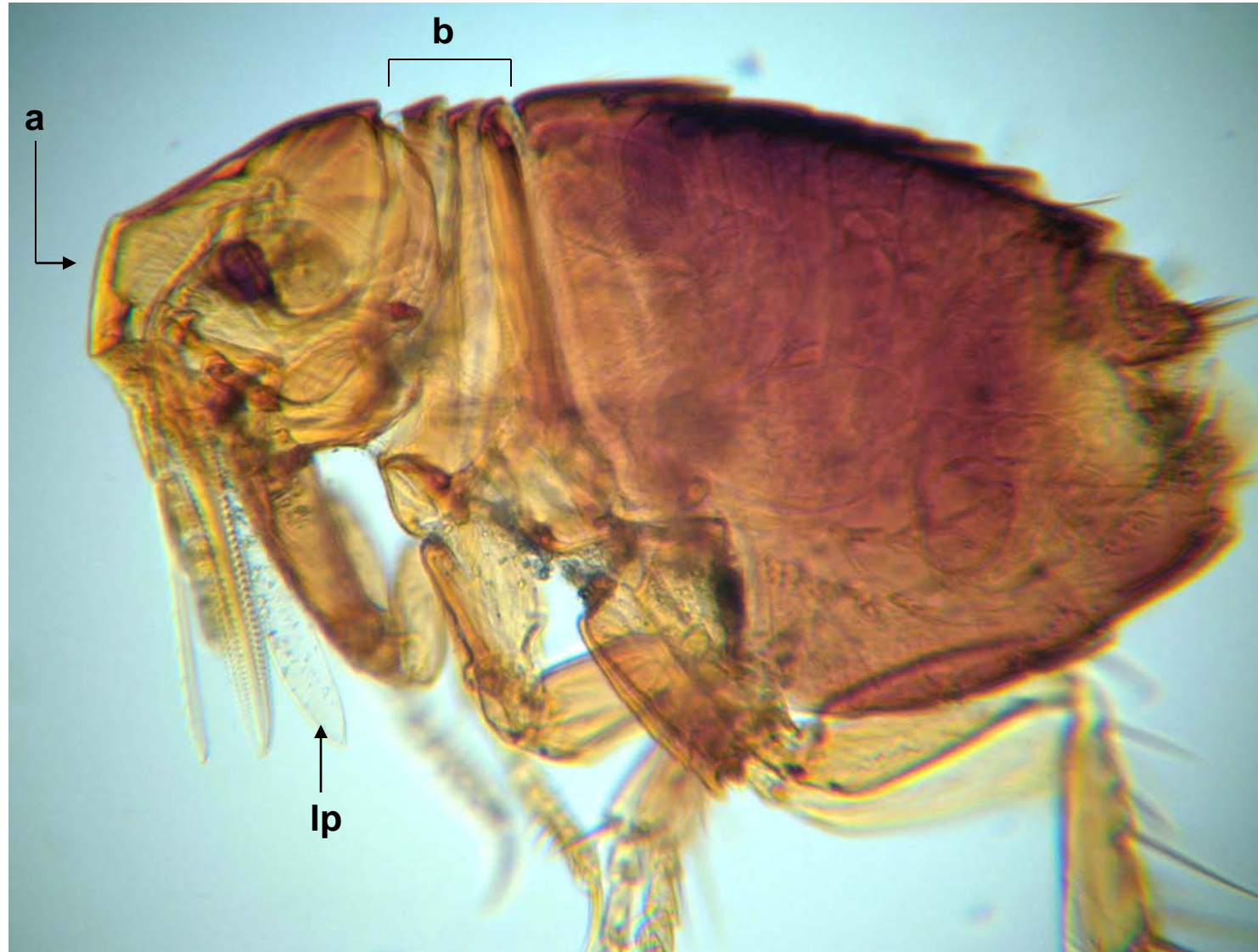
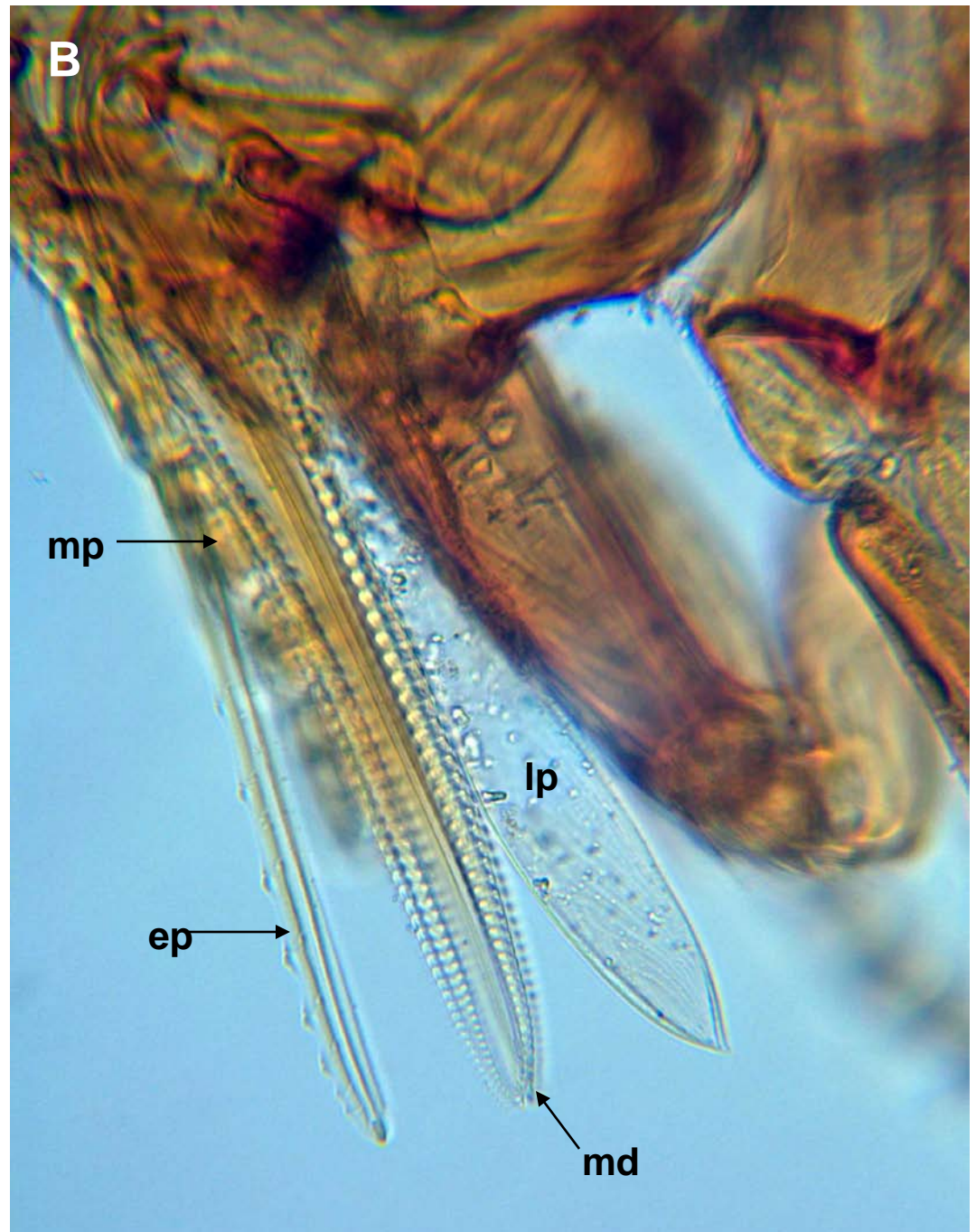


Echidnophaga gallinacea, (“sticktight” flea) female. Note the absence of ctenidia. Also, angular head with flattened clypeal area (a), compressed thoracic segments (b), and unsegmented, membraneous, labial palp (lp).



Echidnophaga gallinacea
mouthparts (box in A
enlarged in B). Legend: ep,
epipharynx (with salivary
channel)?; lp, labial palp;
md, serrated mandibles; and
mp, maxillary palp;



E. gallinaea, spermatheca (female).

